

Classify Urban/Suburban/Rural Sites for OHCA Research across PAROS Countries

Name: Chanwei, Kuo

Designation/Department: Emergency Department, ChangGung
Medical Foundation, Taoyuan

Country: Taiwan



Outline of Proposal

- ▶ Introduction
- ▶ Aims/Hypotheses
- ▶ Methods
- ▶ Significance



Introduction(1)

- ▶ The character of OHCA patients and the outcome of resuscitation are different across urban, suburban, and rural location.
- ▶ However, the definition of urban, suburban, and rural has not been established in OHCA research taxonomy.
- ▶ Different countries have different definitions



Introduction(2)

- ▶ Most of the definitions are related to population density, but not directly linked to OHCA research purpose.
- ▶ For example, an EMS station may be located in a town center of a middle-sized county and can be classified as either suburban or rural one according to different definitions.



Aims / Hypotheses

- ▶ Classify Urban/Suburban/Rural Sites for OHCA Research across PAROS Countries
- ▶ In our previous study in Taoyuan County, OHCA volume of each fire/EMS station was highly related to the population density.



Hypotheses

- ▶ The more OHCA cases managed in a given period of time, the larger population the station served.
- ▶ We could draw a clearly-cutting line between urban/suburban and suburban/rural sites on the graph of EMS stations ranking in order of OHCA volume.
- ▶ We hypothesises that our experience is also applicable in other study sites of PAROS.



© 2010 Europa Technologies

© 2010 Tele Atlas

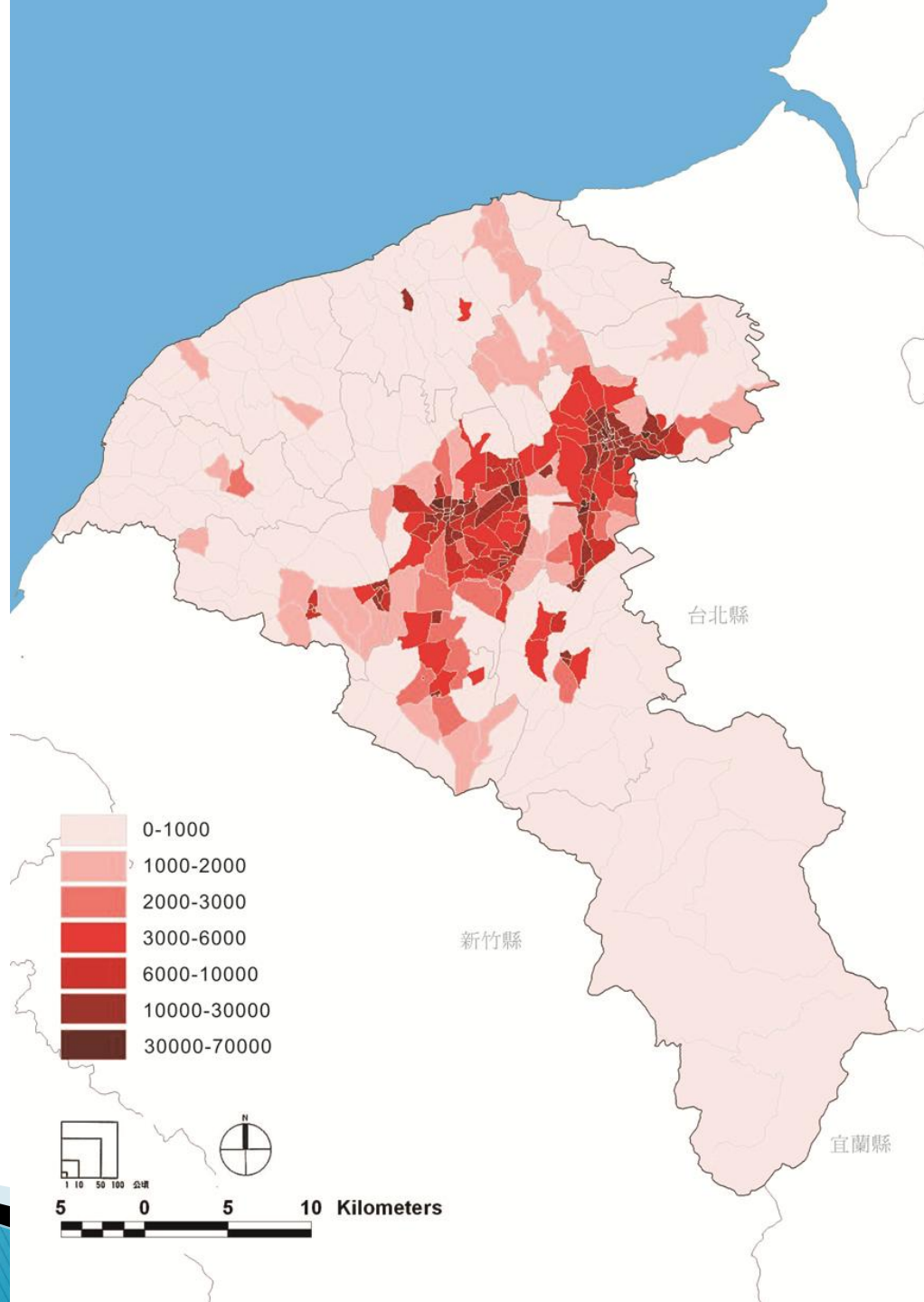
© 2010 Google

US Dept of State Geographer

©201

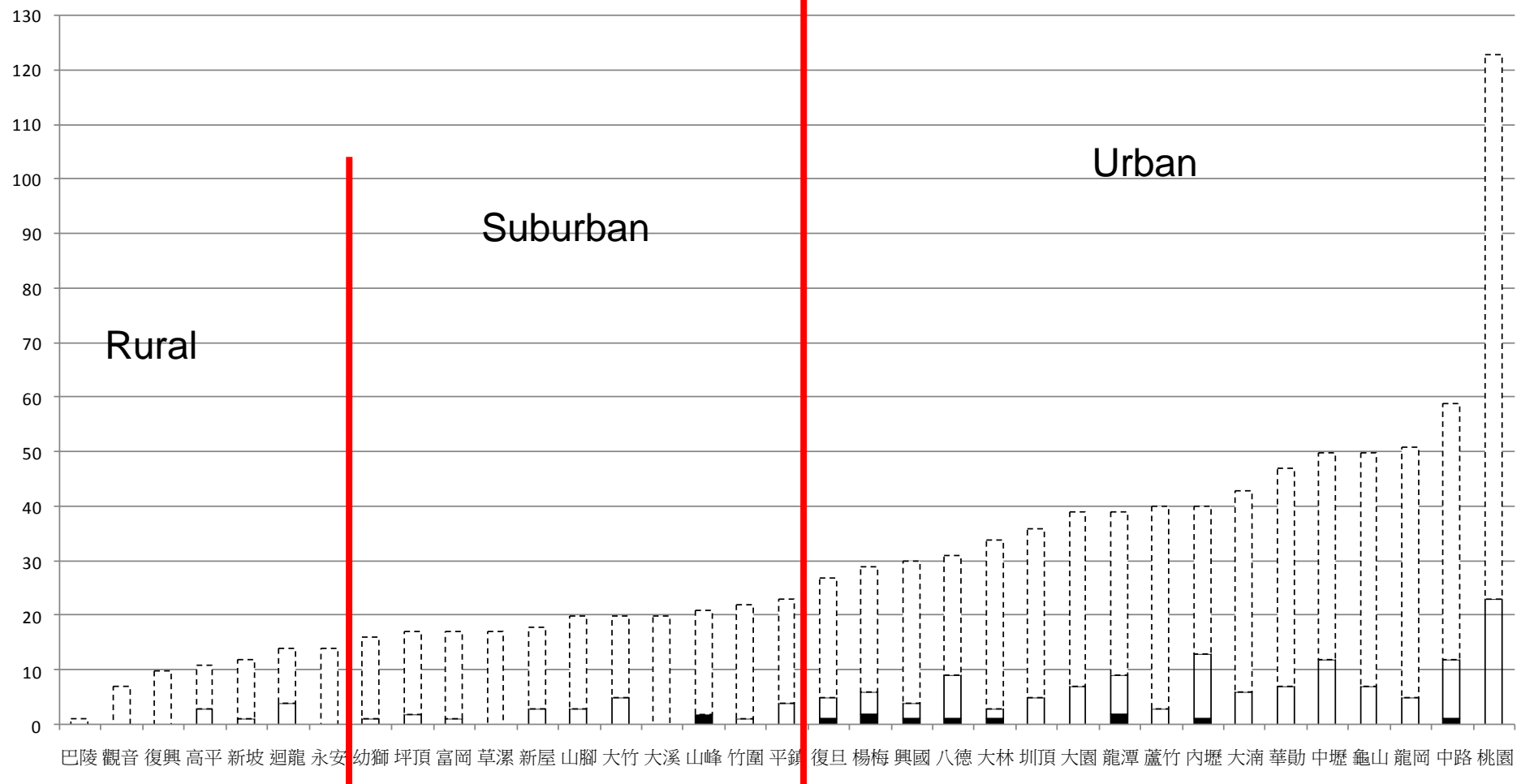


© 2010 Kingway Ltd.
© 2010 Cnes/Spot Image
Image © 2010 DigitalGlobe
Data © 2010 MTRC/JHA
24°51'04.71"北 121°18'03.86"東 海拔高度 273 公尺





Case number in 9 months



Urban

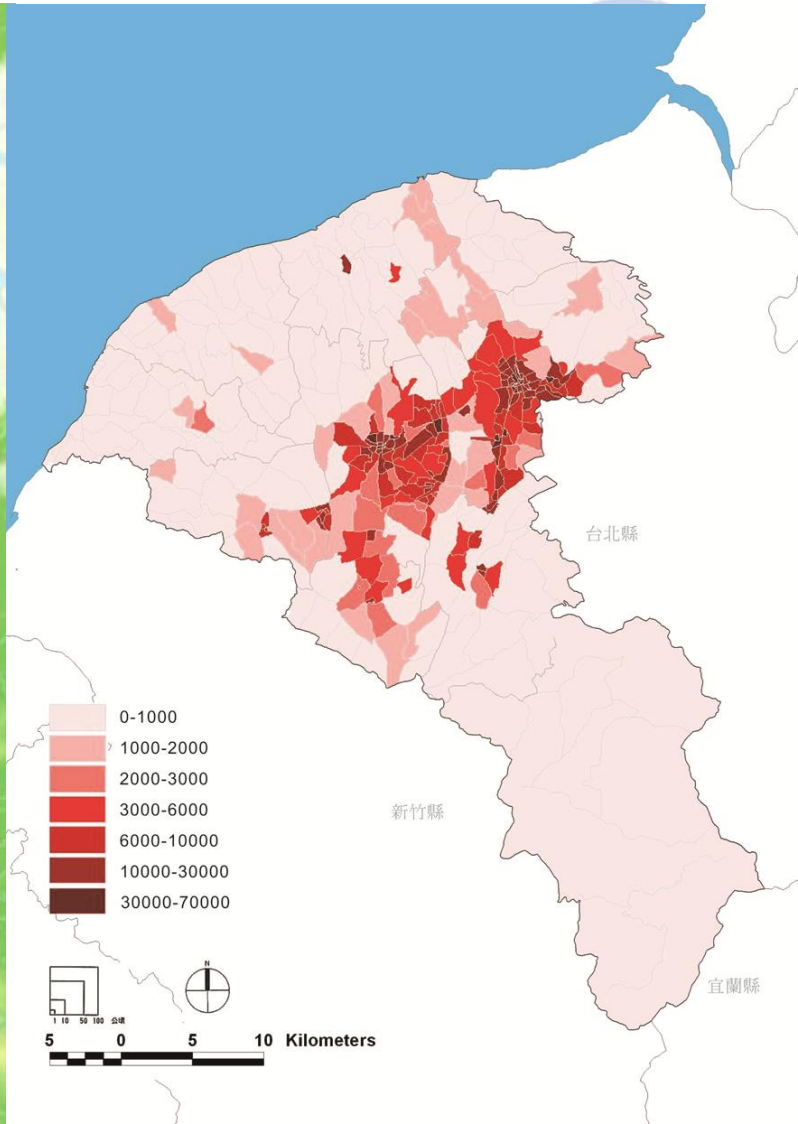
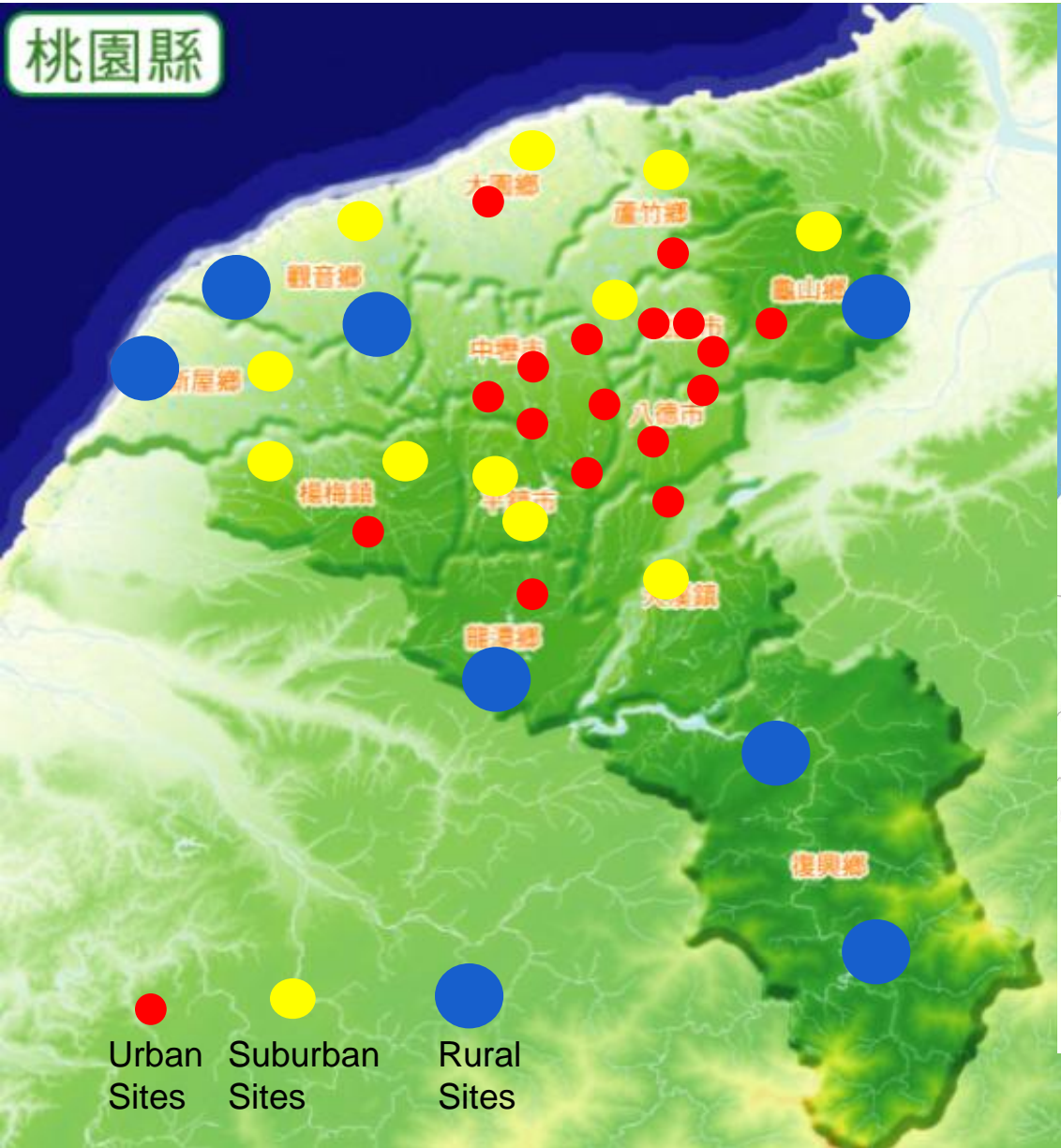
Suburban

Rural

巴陵 觀音 復興 高平 新坡 迴龍 永安 幼獅 坪頂 富岡 草漯 新屋 山腳 大竹 大溪 山峰 竹圍 平鎮 復旦 楊梅 興國 八德 大林 圳頂 大園 龍潭 蘆竹 內壢 大湳 華助 中壢 龜山 龍岡 中路 桃園

Branch stations

桃園縣





Methods(1)

- ▶ Include all study sites of PAROS.
- ▶ Create graphs of EMS stations ranking in order of OHCA volume in each study site.
- ▶ The principle investigators of each site have to fill the questionnaire listed below,



Methods(2)

- ▶ 1. In your study city/county, which of the following is more accurate to describe different EMS stations?
 - a. All urban
 - b. Urban/suburban
 - c. Urban/suburban/rural
 - d. Others_____

- ▶ 2. Do you already have good state or national definition for above classification for OHCA research in your study city/county?
 - a. Yes, and it is _____
 - b. No



Methods(3)

- ▶ 2. Can you draw a clearly-cutting line on the graph of EMS stations ranking in order of OHCA volume to distinguish different types of stations?
 - a. Yes
 - b. No, the reason is _____
- ▶ 3. If the answer of question 2 is yes, How will you draw the line? Please use OHCA volume per month as measure unit.
- ▶ 4. Do you find any station which is grouped into urban/suburban/rural is exception or in doubt? And why?



Significance

- ▶ After the definition being confirmed, we can proceed with secondary analysis that how urban, suburban, and rural locations affect the outcome of OHCA resuscitation across different Countries, and find out the better strategy of each location to improve the performance.