



Overview of ED overcrowding in ASIA

Name: Wonchul Cha

Designation/Department: Emergency physician

Country: Republic of Korea



Outline of Proposal

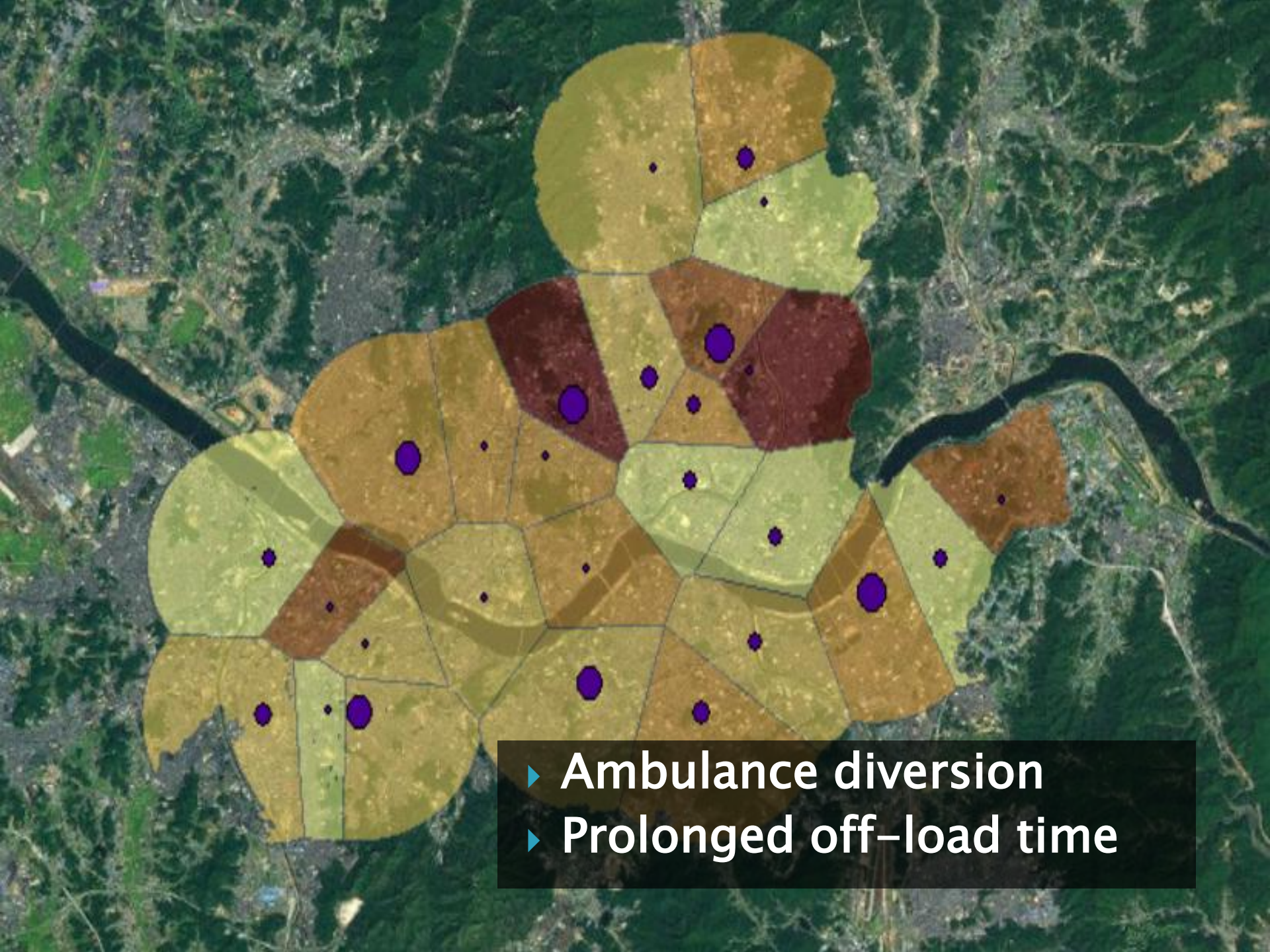
- ▶ Introduction
- ▶ Aims/Hypotheses
- ▶ Methods
- ▶ Significance

Introduction



- ▶ Safety
- ▶ Satisfaction
- ▶ Quality of care





- ▶ Ambulance diversion
- ▶ Prolonged off-load time



- ▶ Problematic
- ▶ Unclear epidemiology
- ▶ Appropriateness of Model



Objective

▶ Primary

- To describe ED overcrowding in Asian countries
 - Input factors
 - Throughput factors
 - Output factors

▶ Secondary

- To compare physician perception on overcrowding
 - Definition
 - Effect
 - Solution



Methods

- ▶ Inclusion
 - Hospital unit : PAROS PIs

- ▶ Study design
 - Structured questions : survey

- ▶ Statistics
 - Demonstration of demographic data



Survey (I) : Hospital Demographics

- ▶ Teaching hospital ? (y/n)
- ▶ Hospital total bed ()
- ▶ Hospital ICU bed ()
- ▶ Number of doctors (faculty) ()
- ▶ Number of nurses (Registered nurses) ()

- ▶ Number of admissions during last year ()
- ▶ Number of OPD visitors during last year ()
- ▶ Number of surgery during last year ()

- ▶ PCI available? (24 hr / office hour / none)
- ▶ Open heart surgery? (24 hr / office hour / none)



Survey (II) : Input Factors

- ▶ Total ED visitors in 2009 ()
 - Female % ()
 - Age distribution % (<15, 15~65, >65) (, ,)
 - Age (mean/SD) (/)
- ▶ Pts transferred via EMS % ()
- ▶ Pts with governmental aid % ()
- ▶ Pts with injury (or trauma) % ()
- ▶ Pts disposition
 - DOA or death in ED % ()
 - Ward admission ()
 - ICU admission ()
 - Emergency surgery ()



Survey (III) : Throughput Factors

- ▶ Is there a Fast track (walk-in clinic)? (24hr/office hour/none)
- ▶ Is there a triage nurse in ED?
- ▶ Are there critical pathways for certain illness?
- ▶ How many beds are there in ED? ()
- ▶ How many ventilators are therein ED?
- ▶ Is there POCT for ABGA in ED?
- ▶ Is there POCT for cardiac markers, d-dimer in ED?
- ▶ Is there a separate x-ray facility and personnel in ED?

- ▶ How many doctors (including residents and interns) are there in ED (overall registered/per shift)? (/)
- ▶ How many nurses are there in ED? (overall registered/per shift)? (/)
- ▶ How many EMTs are there in ED? (overall registered/per shift)? (/)

Survey (IV) : Output Factors



- ▶ How many beds in the wards are exclusively reserved for ED? ()
- ▶ How many beds in the ICUs are exclusively reserved for ED? ()
- ▶ Are there designated hospitals that will receive your patients when your hospital is full?



Survey (V) : Overcrowding State

- ▶ How many hours was your ED in ambulance diversion state last year?
- ▶ What was the average LOS of overall patients in ED last year? (mean, SD)
- ▶ What was the average LOS of admitted patients in ED last year? (mean, SD)
- ▶ What was the average LOS of surgical patients in ED last year? (mean, SD)



Survey (VI) : Physician's Perception

- ▶ How many days a week do you think your ED is crowded? (scale)
- ▶ What do you think is the definition of overcrowding? (scale)
 - Patient–bed ratio
 - Boarding time > 6 hours
 - Ambulance diversion
 - Leave without being seen
 - Ambulance stretchers waiting for bed
- ▶ What do you think is the cause of overcrowding? (scale)
 - Input overflow
 - Throughput bottleneck
 - Output bottleneck

Significance



- ▶ PAROS' first step to extend interest to hospital system
- ▶ First step towards solution to ED overcrowding
 - Modeling and statistical analysis should follow
 - Simulation method will help



TEAMWORK

When there's a will, there's a way