

# Research Opportunities with Registries

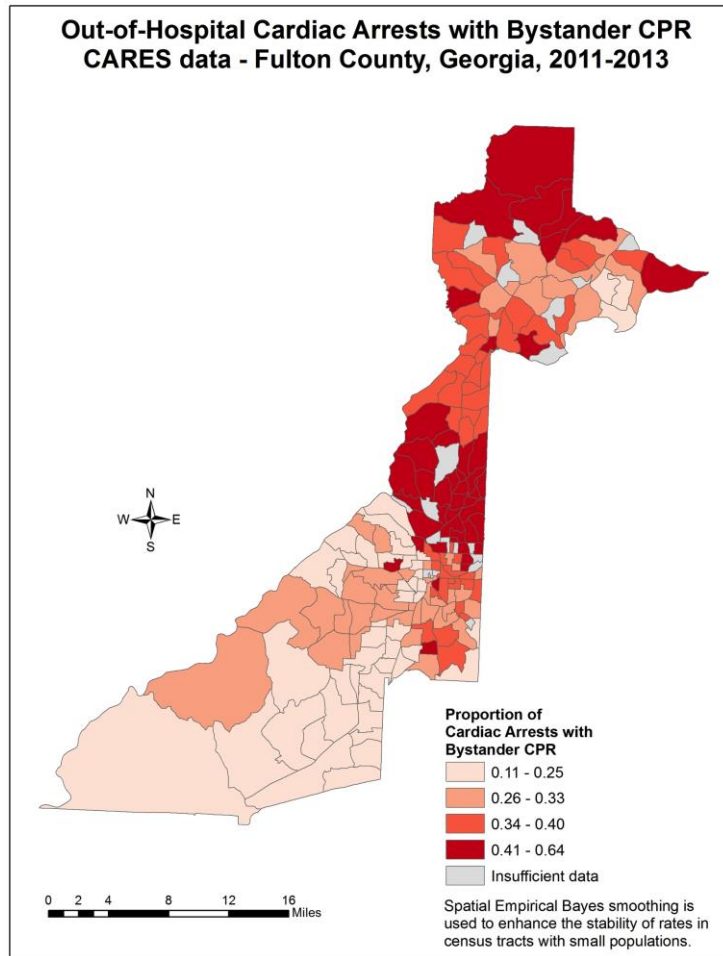
## Cardiac Arrest Registry to Enhance Survival

OHCA Registry Meeting  
October 2018  
Singapore

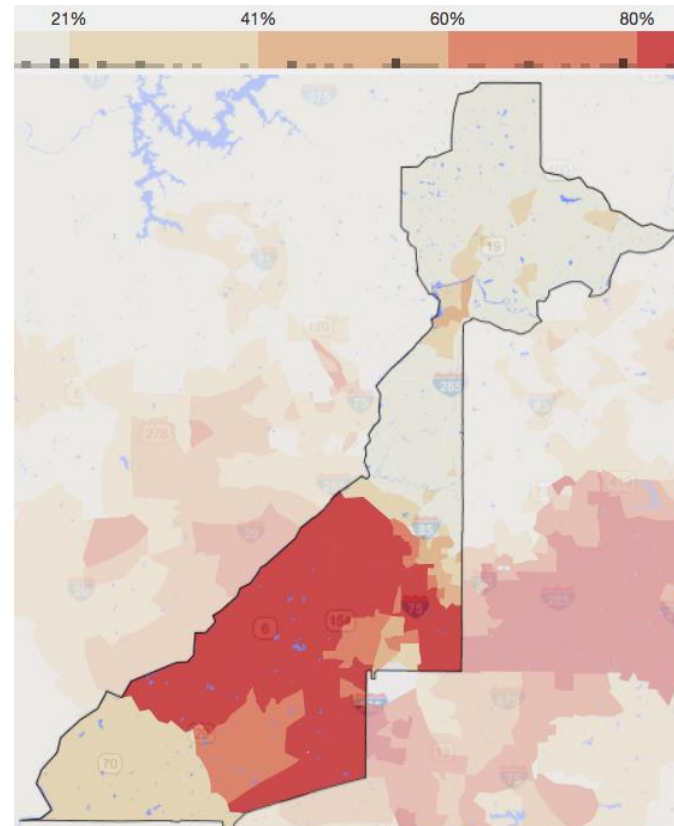
# PREVIOUS CARES RESEARCH

*51 Peer Reviewed Publications*

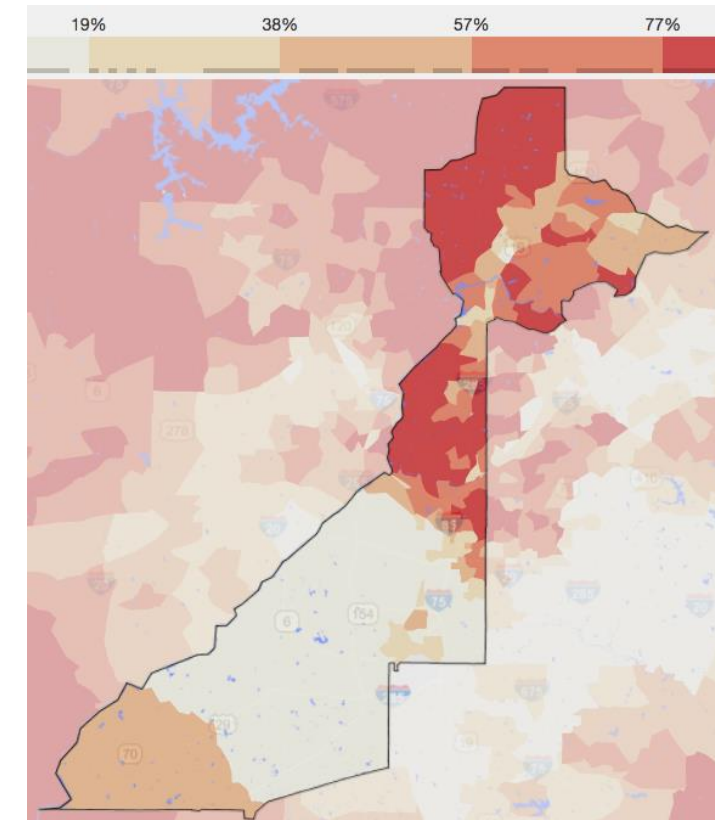
# Bystander CPR & Neighborhood Race



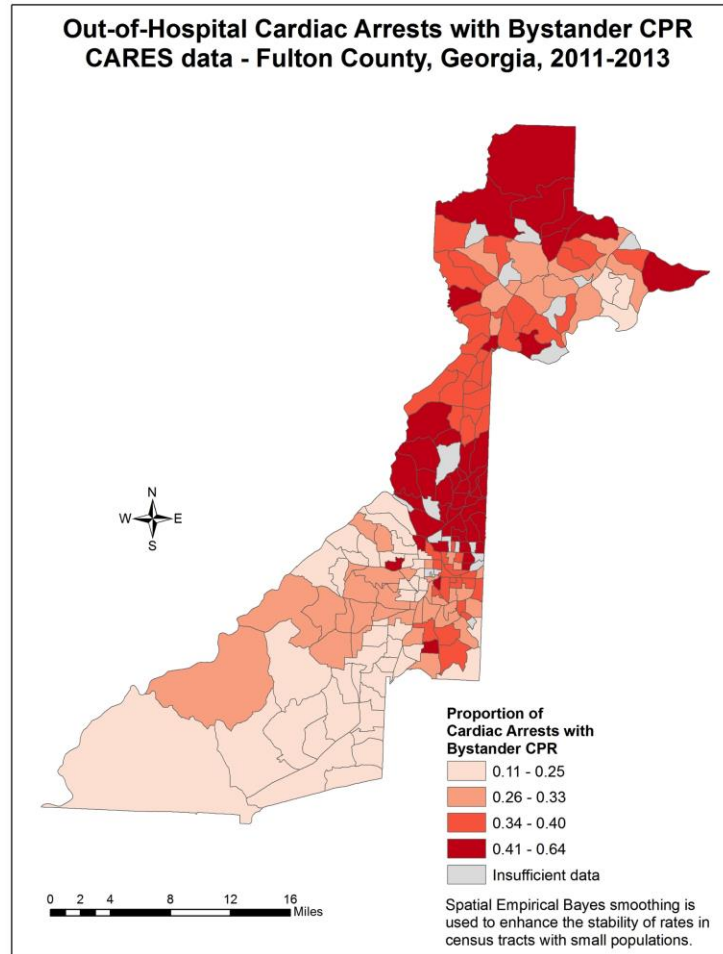
Black race as a percentage of the population (%)



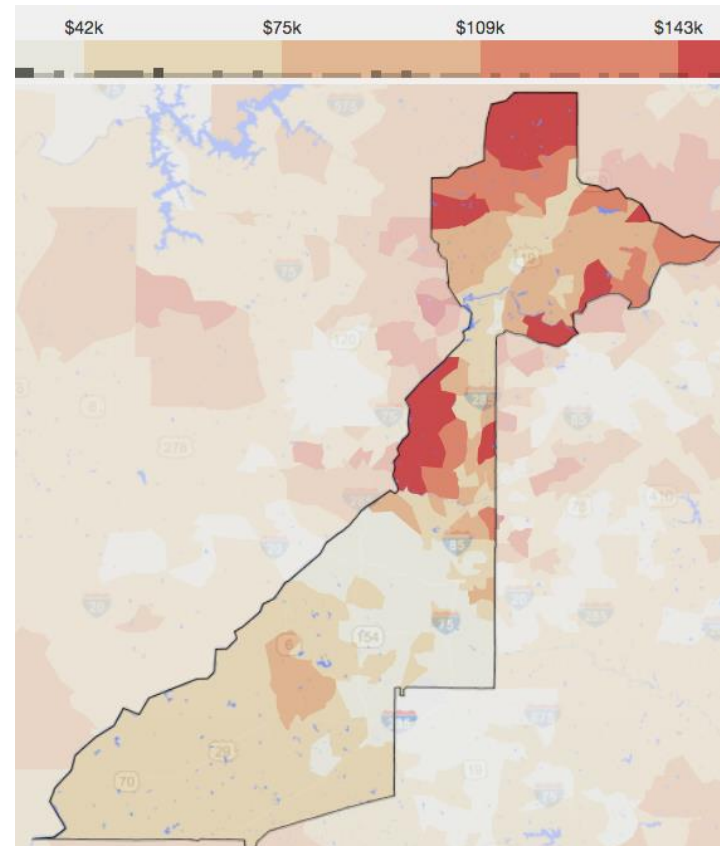
White (non-Hispanic) race as a percentage of the population (%)



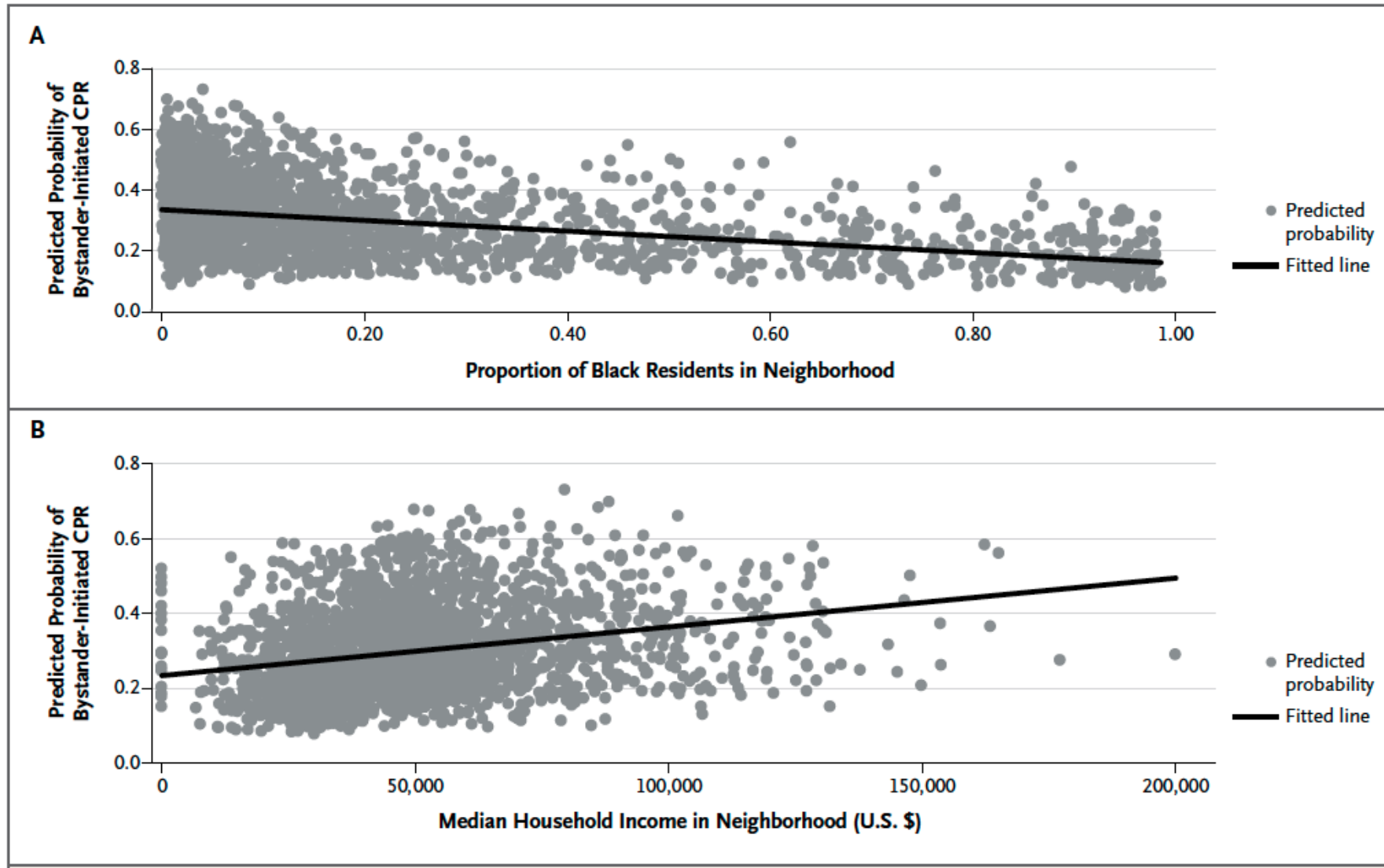
# Bystander CPR & Median Household Income



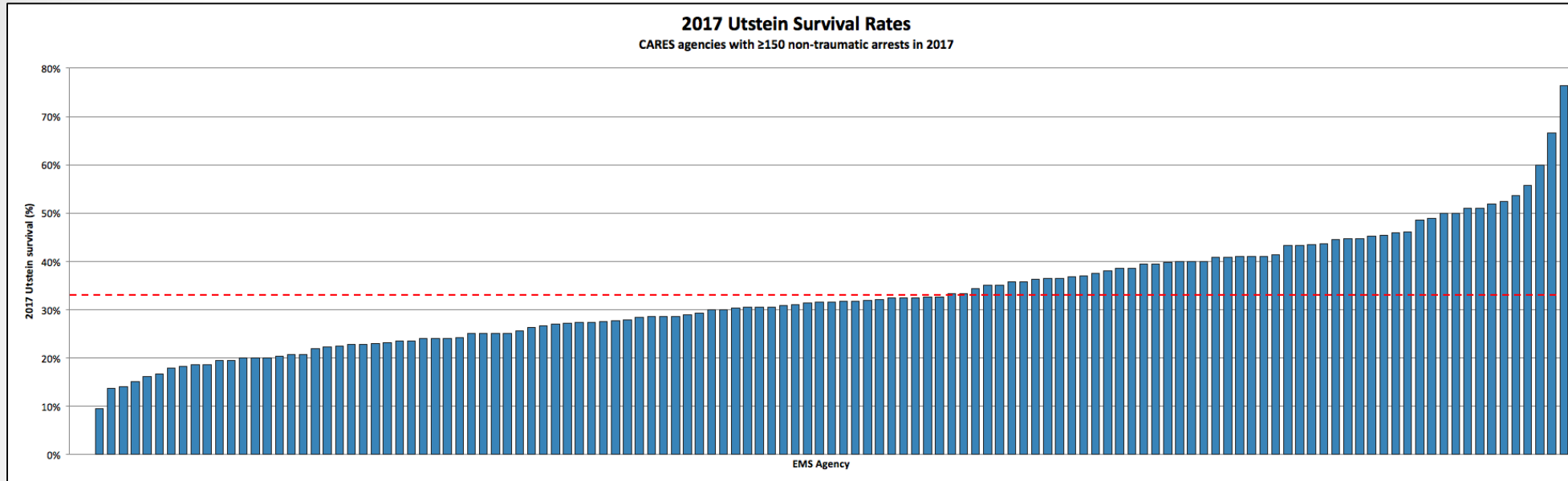
Median household income by census tract



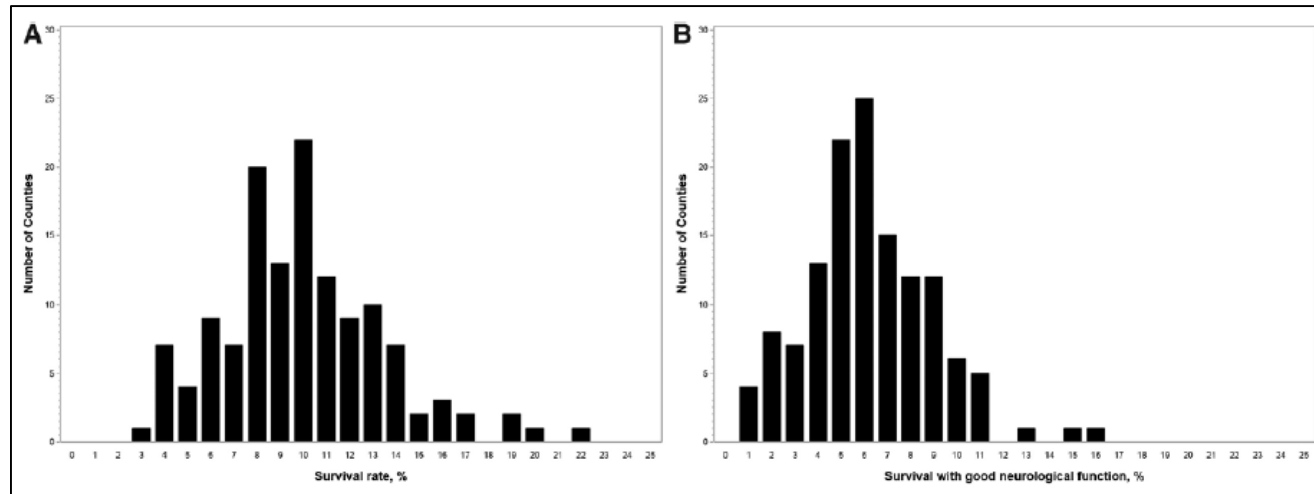
# Bystander CPR & Neighborhood Characteristics



# Variability in Outcomes

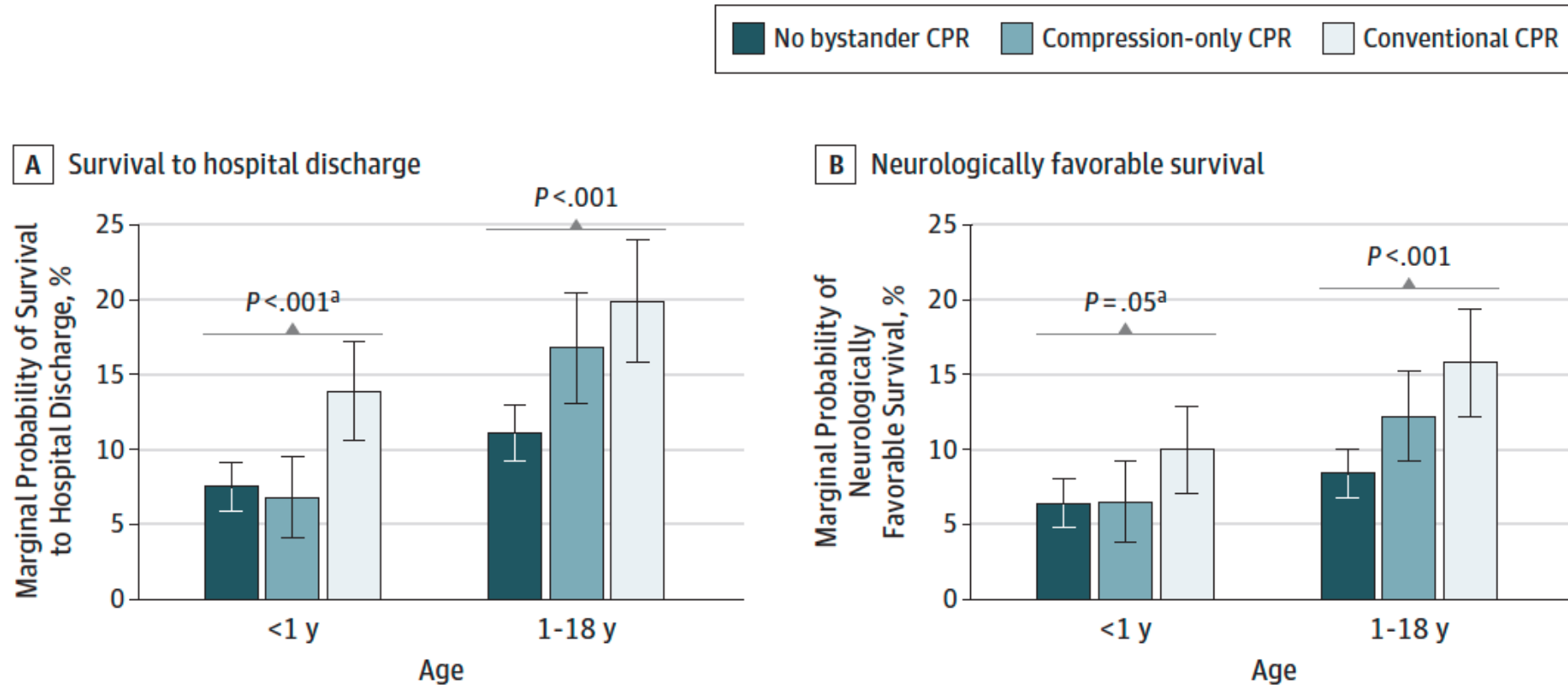


EMS AGENCY



COUNTY

# Bystander CPR and Pediatric Outcomes



# CURRENT CARES PROJECTS

*16 National*

*15 State-Level*



# National Data Sharing Projects

- Association of sex with OHCA characteristics, hospital interventions, & outcomes
- Association of neighborhood characteristics and survival
- EMS Agency TOR rates and overall survival
- Impact of state CPR and AED education legislation
- Disparities in receipt and utilization of DA-CPR
- Scene time interval and neurological outcomes
- DALY lost due to OHCA

# National Data Sharing Projects – Unique Populations

- Type of CPR & outcomes following drowning
- Characteristics of OHCA in outpatient dialysis clinics
- Pediatric Analyses
  - Conventional vs. CO-CPR
  - Characteristics and outcomes of AED use in public
  - Association of neighborhood characteristics and bCPR provision
  - Advanced airway placement

# State Data Sharing Projects

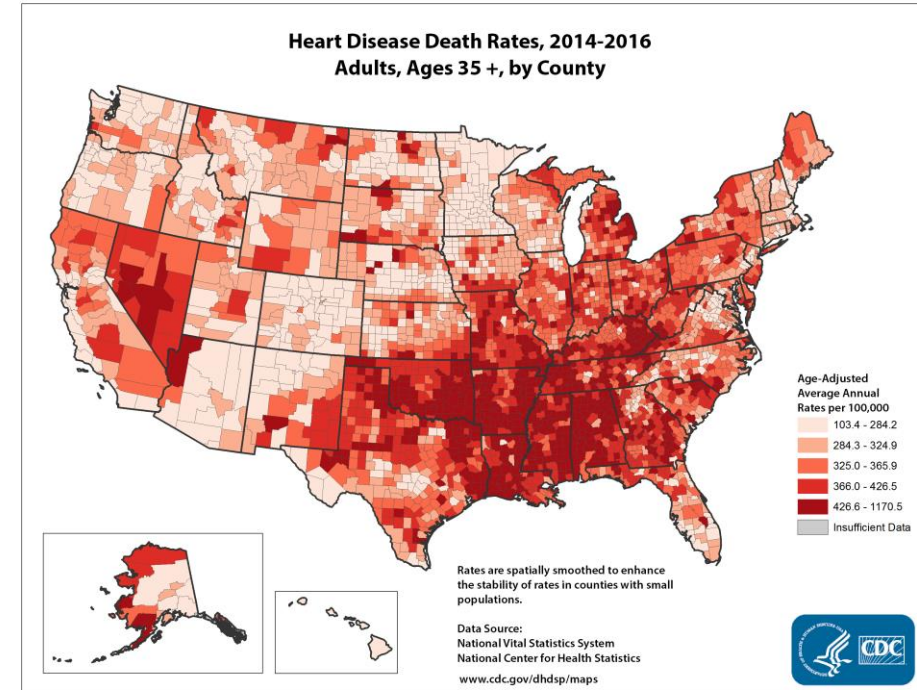
- Impact of California wildfires on OHCA incidence/outcomes
- Opioid epidemic atlas (Northern New England)
- HeartSafe community designation and OHCA outcomes in Connecticut
- Association of hands-only CPR knowledge and bCPR rates
- Care and outcomes of urban and non-urban OHCA patients
- Post admission variability in OHCA survival outcomes
- Using administrative claims data for measuring risk-adjusted outcomes (Medicare linkage)



# FUTURE DIRECTIONS

# Opportunities for Data Enhancement

- Linkage with other datasets (Medicare)
- Data visualization in ArcGIS
- Risk-adjusted survival rates
- Evaluating temporal trends in community outcomes
- Comparison among “like” EMS agencies



# International Collaboration

- Out-of-hospital cardiac arrest survival in international airports



- ILCOR survey



- PAROS - shared software platform and taxonomy

